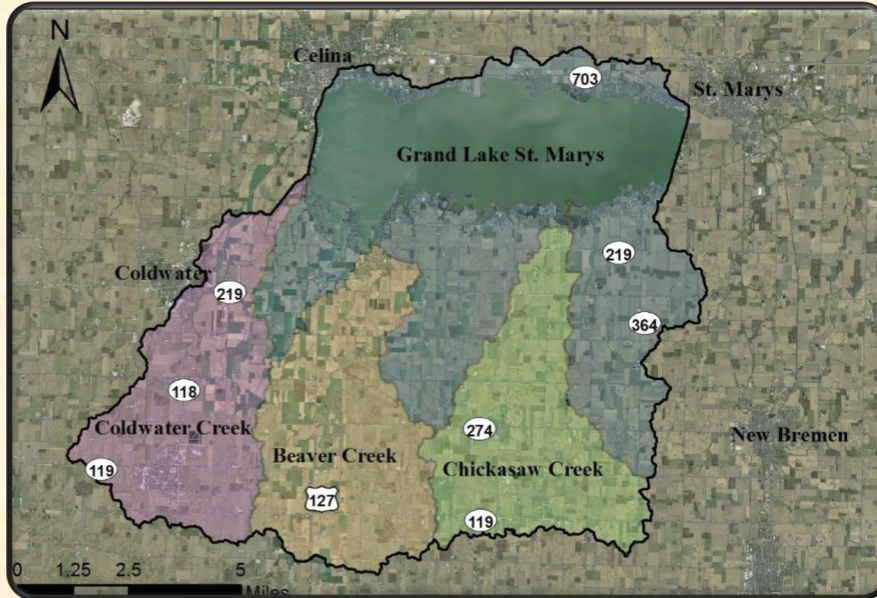


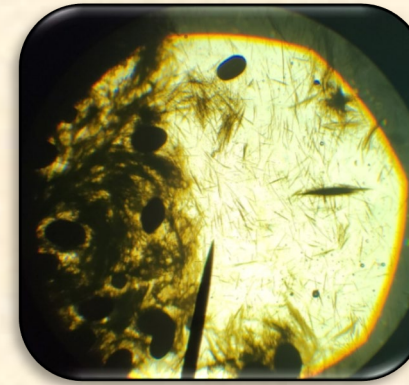
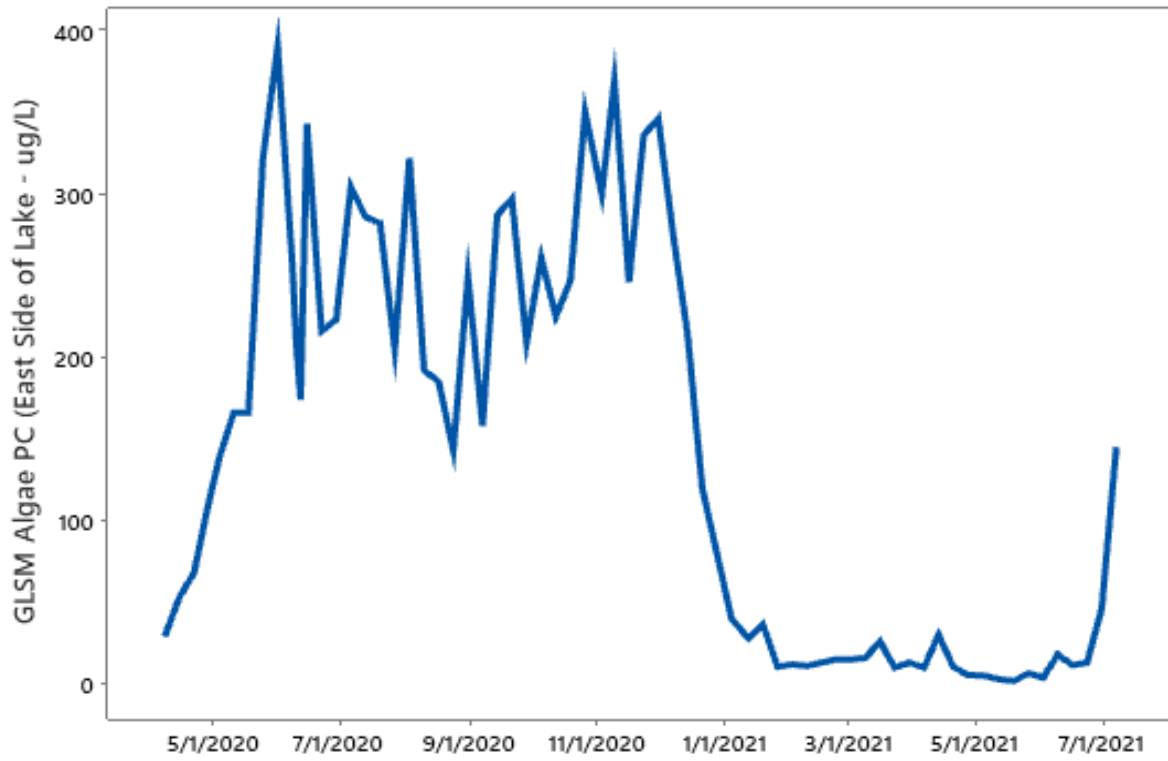
GRAND LAKE ST MARYS WATER QUALITY UPDATE – JULY 2021



STEPHEN J. JACQUEMIN
WRIGHT STATE UNIVERSITY – LAKE CAMPUS,
AGRICULTURAL AND WATER QUALITY EDUCATIONAL CENTER



GLSM Summer 2021 July Update



GLSM HAB / Environmental Patterns in 2021

- Low Spring External Loading (Low Runoff)
- High Summer Internal Loading (High Sediment Legacy)
- Gradual Shift to Cyanos from Greens/Diatoms
 - Aphanizomenon/Microcystis more dominant than Plank.
- Need to Continue to Make Progress in Watershed

