



**Celina Farmers' Market**  
 Mercer County Fairgrounds  
 1001 W. Market Street, Celina

Enjoy breakfast while you shop! The Celina Farmers' Market is a great place to find farm fresh produce, eggs, meats, home prepared foods, plants and artisan crafts. With over 50 registered vendors, shoppers will find a wide and ever-changing selection of items. Get there early so you don't miss out on the best selection! The farmers' market is held every Saturday from 9:00 am until noon from May through September.

At this stop, Mercer County Farm Bureau will provide market bucks to use at your favorite vendors. Bonus bucks if you are a Farm Bureau member! In addition, there will be complimentary coffee, milk or yogurt, courtesy of MVP Dairy!



**Two-Stage Channel at Howick Farms**  
 7541 State Route 197, Celina

Mercer County received a Great Lakes Restoration Initiative (GLRI) Grant to convert a traditional drainage channel to a two-stage channel on Howick Farms in 2021. Two-stage channels allow the floodplain to be reconnected to the channel by widening the overall top width. This is accomplished with the addition of benches and flatter sideslopes. The grass on the benches allow for filtration during higher flow events to improve water quality. This project will be extended with additional GLRI funds in 2025.

At this stop, you will learn about the value of two-stage channels from local experts.



**Conservation Practices at Dave McNeilan Farm**  
 8977 Wabash Road, Celina

Dave McNeilan has installed several conservation practices on this particular farm. A cascading waterway and a small wetland were installed in 2023 utilizing a Great Lake Sediment and Nutrient Reduction Program grant. A water and sediment control basin was installed in 2022 utilizing a Great Lakes Restoration Initiative grant. Dave has installed many other best management practices on his other farms as well and is a great friend of conservation!

At this stop, you will learn about wetlands, cascading waterways, water and sediment control basins from local experts.



**Burntwood-Langenkamp Wetland Conservation Area**  
 Coldwater Creek Road between Green and Younger Roads

This unique site was acquired by the Lake Facilities Authority in 2020 from the Langenkamp Family utilizing a Clean Ohio Greenspace grant. Construction began in 2021 by way of an ODNR H2Ohio grant. This site filters up to 6,000 acres of watershed upstream of Burntwood Creek, which ultimately drains to Grand Lake St. Marys. Situated on 88.9 acres, it provides wetland, upland grass, pollinator and forest habitat.

Local experts will be on-hand to discuss the project in more detail and feel free to enjoy over one mile of walking paths through this one-of-a-kind natural space. The site is open to the public seven days a week from sunrise to sunset.



**Fennig Equipment**  
 841 State Route 29, Celina

Fennig Equipment is a family owned business, with over 100 years of farming experience. As farmers, they know what a good product can do for your bottom line. The product lines that Fennig Equipment offers represents the same equipment that they use on their own family farm.

From cover crop seeders, strip tillage equipment, variable rate technology, sprayers and more, this is your one-stop shop for all of your conservation-friendly equipment. Come see what they have to offer and tour their new facility located at the former Wabash Garage.



**Special THANK YOU to all of the sites and hosts for their dedication to agriculture and conservation in Mercer County.**

*All precautions for your comfort and safety have been taken. The partners, sponsors and hosts are not responsible for accidents.*



**Cooper Farms Feed Mill**  
 3310 State Route 49, Ft. Recovery

Cooper Farms celebrated 85 years as a family owned and operated farm and food company in 2023. It has grown from a small turkey hatchery started in 1938 to a diversified, vertically integrated turkey, hog and egg company that has stood the test of time in an ever-changing industry. Cooper Farms prides itself on forming lasting customer relationships and producing the highest quality meat and egg products for private label retail and food service companies.

The Cooper Farms Feed Mill was constructed in 1992 to increase feed manufacturing for their turkeys. It initially had the capacity to manufacture 450,000 tons of feed per year. In 2008, the Feed Mill was expanded to add over 1,200 tons of storage for feed processing.

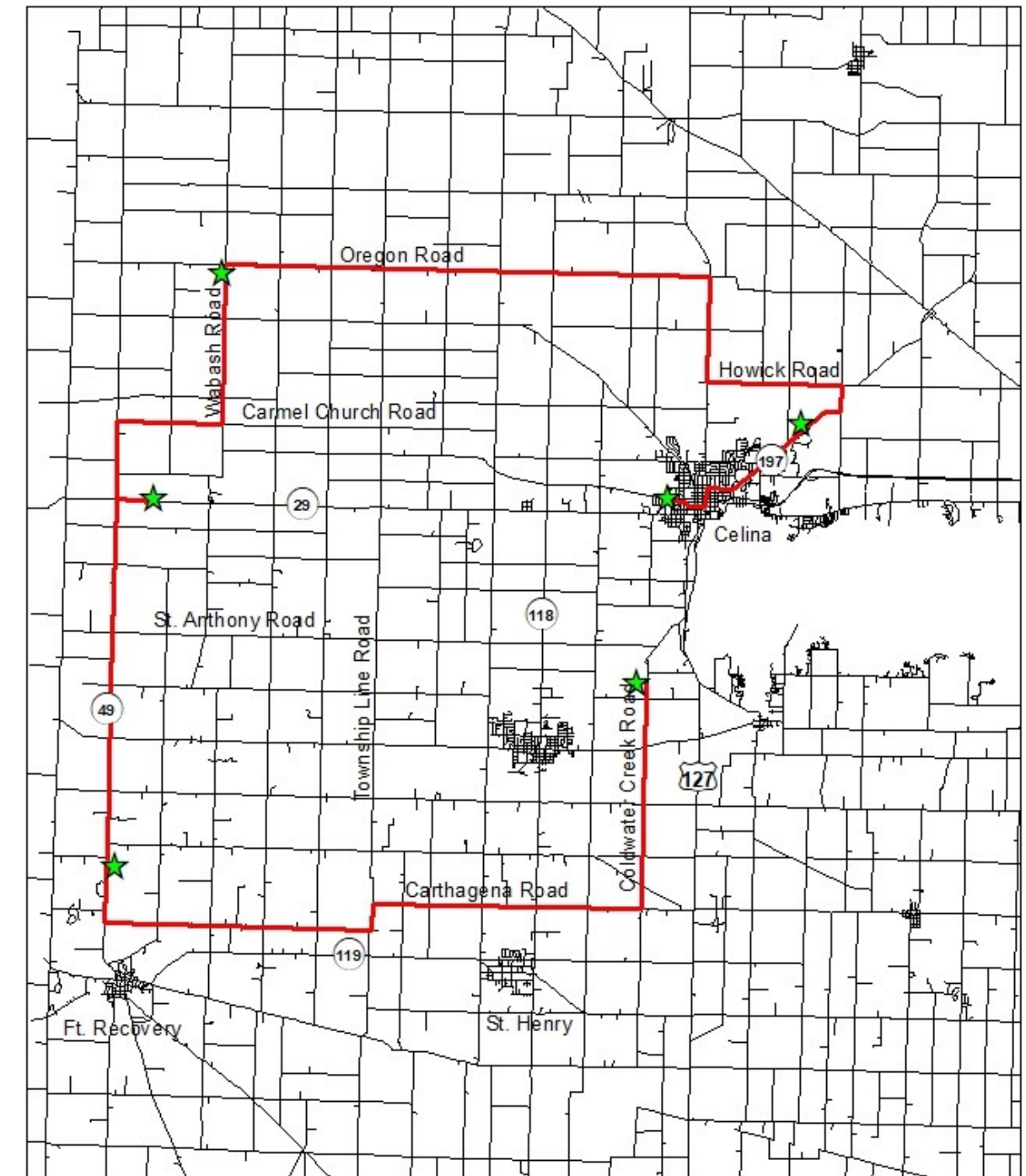
At this stop enjoy **lunch from 11 am to 1 pm (first come, first served)**. Representatives of Cooper Farms will be providing information about the company and offering tours of the Feed Mill.



Highlighting Agriculture and Conservation in Mercer County

# Drive-It-Yourself Tour

~ 9:00 am to 1:00 pm Saturday, May 4, 2024 ~



Ag Education Series Partners

## AG EDUCATION SERIES

“A venture to highlight agriculture, natural resources and conservation in Mercer County”

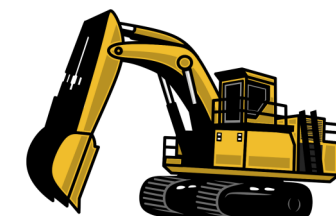
## DRIVE-IT-YOURSELF TOUR

Saturday, May 4, 2024

9:00 AM to 1:00 PM

\*Made possible in part by a Great Lakes Sediment and Nutrient Reduction Grant

A special thank you to:



Join us for **FREE** family fun on a Saturday morning! Each stop will be identified with signage. Descriptions can be found on the flipside of this flyer. Spend as much time as you wish at each stop. You may enter or exit the tour at any point. **Refreshments, Giveaways and Restroom Facilities available at designated stops.**

For more information, call the Mercer SWCD at 419-586-3289 x 3 (No RSVP required).